

## Compressor Mount Kit MERCEDES BENZ

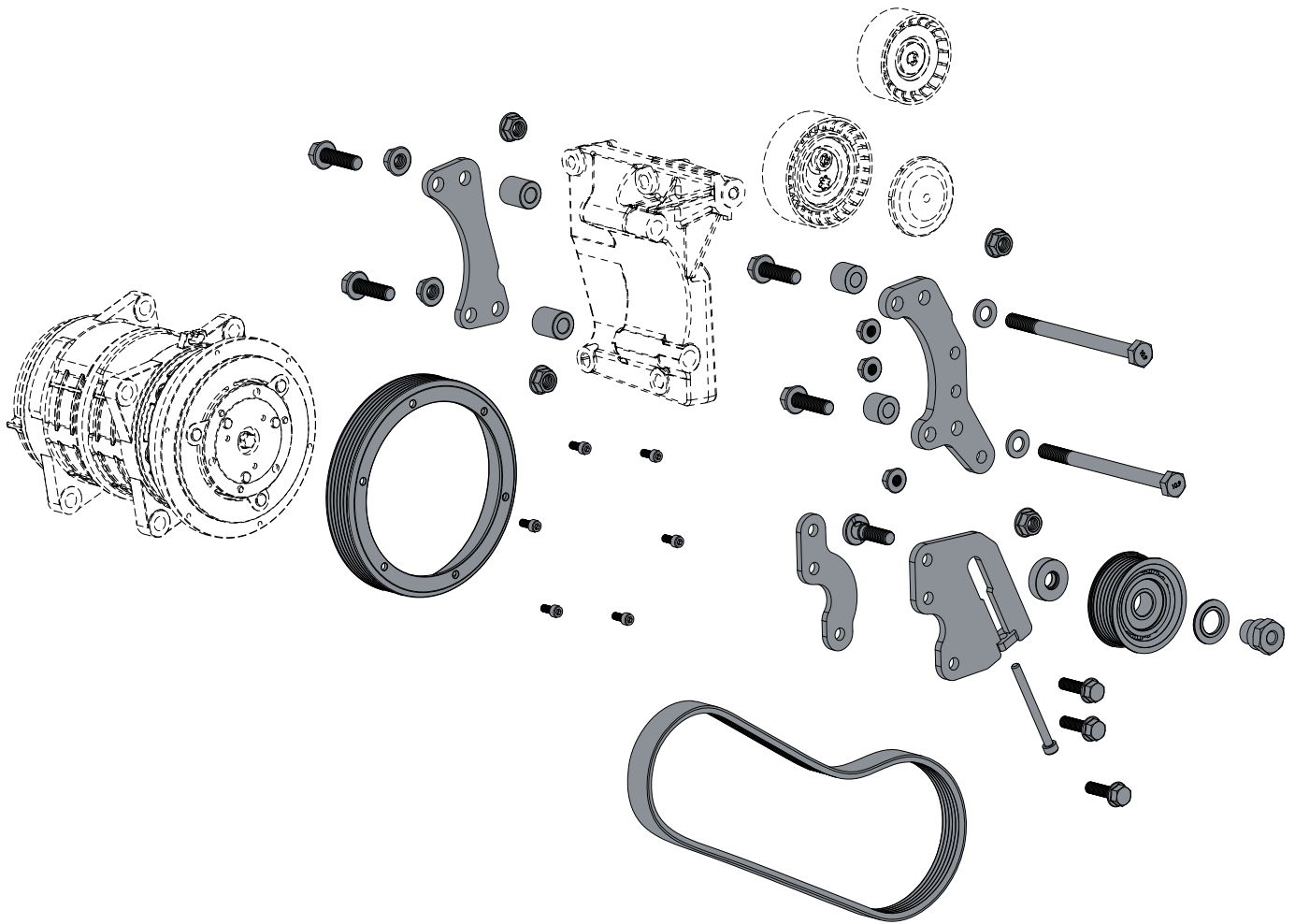
**Model Type:** Sprinter RWD (907)

**Engine Details:** 2.0L OM654 +N63

**Description:** Speed Reduction Kit

**Compressor RPM:** (TM/QP 13/15/16) - 4067 @ Max Engine Power Output

KIT NOS	DESCRIPTION	COMPRESSOR
0500.9562	MERCEDES BENZ SPRINTER - RWD (907) 2.0L OM654 +N63, +/-AC	SELTEC TM 13/15/16 QUE QP 13/15/16



**i** Only for vehicles with factory fitted N63 option. two of the idle pulleys are already fitted to the vehicle, these are also available as spare parts from Techni. Refer to the installation manual for more details.

### Recommended Compressors

	TM-13 HS	TM-15 HS	TM-16 HS	QP-13 HS	QP-15 HS	QP-16 HS
Comp No	0381.0492	0381.0092	0381.0292	0391.0492	0391.0092	0391.0292
Valeo/Que No.	-	488-45063	488-46063	-	QP15-1166	-
Mounting	Ear	Ear	Ear	Ear	Ear	Ear
Rotor	1A	1A	1A	1A	1A	1A
GL	-	-	-	-	-	-
Armature	SL	SL	SL	SL	SL	SL
Diameter	126	126	126	126	126	126
Voltage	12	12	12	12	12	12
Orientation	V	V	V	V	V	V
Fitting	3/4 x 7/8	3/4 x 7/8	3/4 x 7/8	3/4 x 7/8	3/4 x 7/8	3/4 x 7/8
Manifold	Bolt	Bolt	Bolt	Bolt	Bolt	Bolt